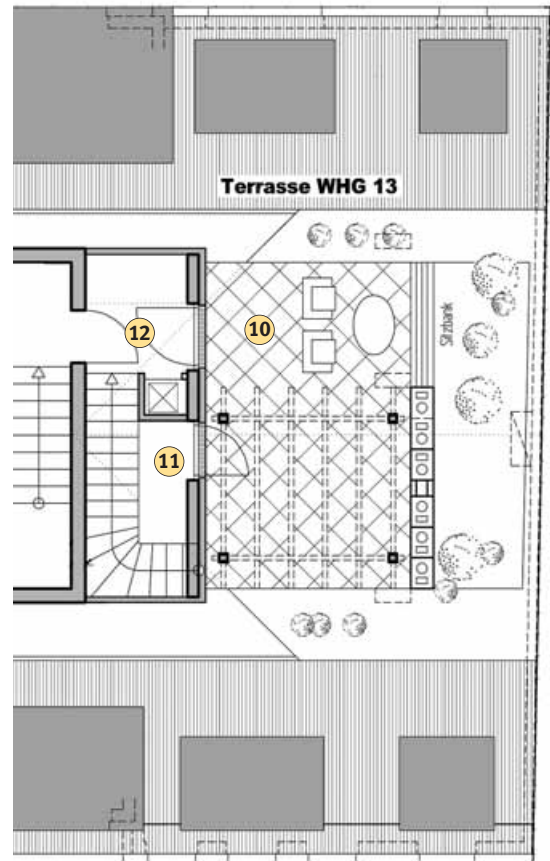
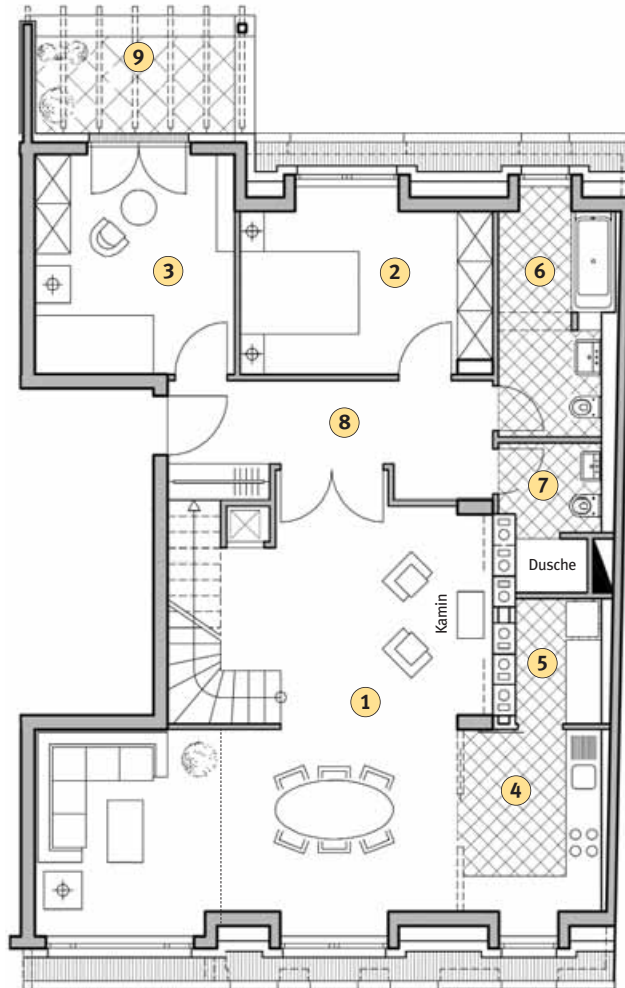


# 6. OG\_rechts/right\_13



## 3-4 Zimmer mit Dachterrasse/3-4 rooms with roof terrace

Wohnfläche in m <sup>2</sup>		Living space in m <sup>2</sup>	
①	ZIMMER (Wohnen + Essen) 44,40 (davon 12,0 m <sup>2</sup> abtrennbar)	①	Room (living + dining) 44.40 (out of which 12,0 m <sup>2</sup> separable)
②	ZIMMER (Schlafen) 14,57	②	Room (bedroom) 14.57
③	ZIMMER 12,45	③	Room 12.45
④	KÜCHE 7,99	④	KITCHEN 7.99
⑤	KAMMER 3,60	⑤	SMALL ROOM 3.60
⑥	BAD 8,06	⑥	BATHROOM 8.06
⑦	GÄSTE WC + DU 4,00	⑦	WC for guests + SHOWER 4.00
⑧	GARDEROBE/FLUR 10,33	⑧	CORRIDOR/WARDROBE 10.33
⑨	BALKON (zu 50%) 3,04	⑨	BALCONY (at 50%) 3.04
⑩	DACHTERRASSE (zu 50%) 9,28	⑩	ROOF TERRACE (at 50%) 9.28
⑪	ABSTELLRAUM (auf d. Dach) 1,21	⑪	STOREROOM (at the roof) 1.21
⑫	FLUR (auf d. Dach) 3,21	⑫	WARDROBE (at the roof) 3.21
<b>Gesamt</b>	<b>122,14</b>	<b>Total</b>	<b>122.14</b>

